



Application

- Can be used to transfer clean water or other liquids similar to water in physical and chemical properties
- Fully automatic water supply in house and garden

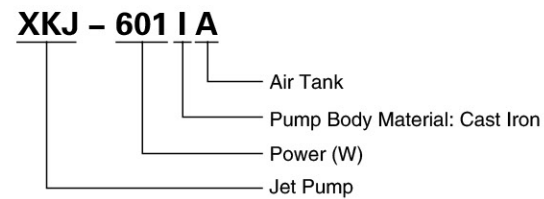
Pump

- Unique ergonomic design
- Max. fluid temperature: +35°C
- Max. suction: +8 m
- 20L pressure tank

Motor

- C&U bearing
- Built-in thermal protector
- Insulation class: F
- Protection class: IPX4
- Max. ambient temperature: +40°C

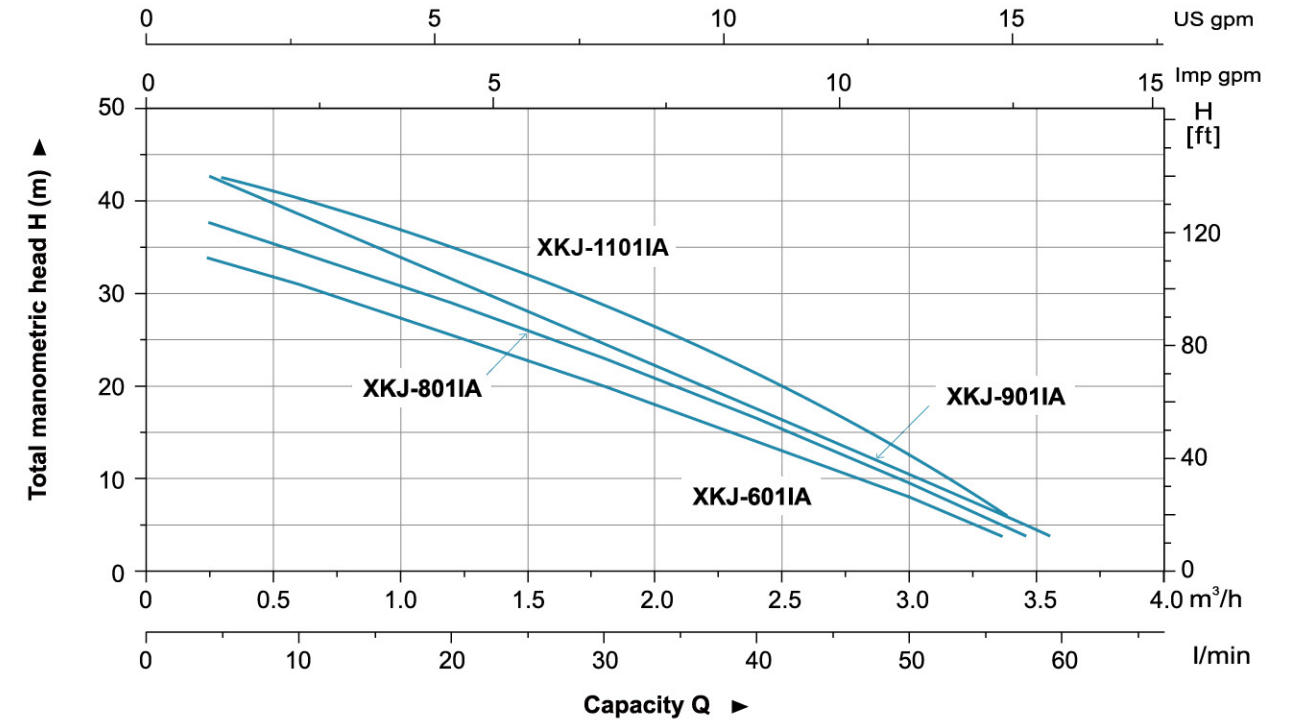
Identification Codes



Technical Data

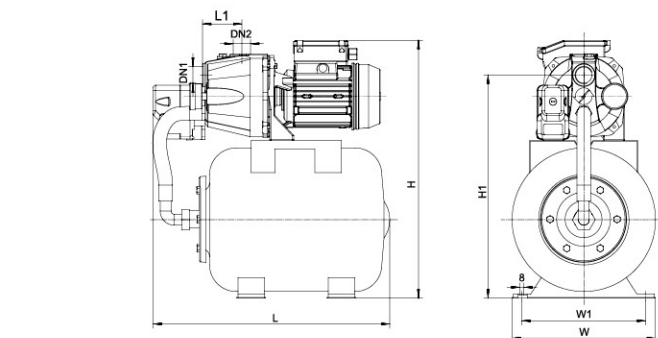
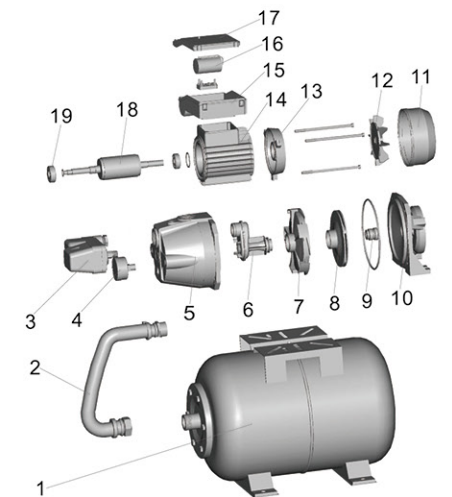
MODEL	POWER (W)	H (m)								
		Q (m³/h)	0	0.6	1.2	1.8	2.4	3	3.6	
XKJ-601IA	600	Q (l/min)	0	10	20	30	40	50	60	
XKJ-601IA	600		35	32	24.5	19	13	8	-	
XKJ-801IA	800		39	34.8	28	21.5	15.5	9.8	-	
XKJ-901IA	900		42	38	31	23.5	17	10	-	
XKJ-1101IA	1100		44	40	35	28	21	12	3	

Hydraulic Performance Curves



Materials Table

No.	Part	Material	No.	Part	Material
1	Tank		16	Capacitor	
2	Flexible Tube		17	Terminal cover	ABS
3	Pressure switch		18	Rotor	
4	Pressure equipment		19	bearing	
5	Pump body	HT200			
6	Venturi tube	PPO			
7	Water out cover	PPO			
8	Impeller	PPO			
9	Mechanical seal				
10	Pump support	HT200			
11	Fan cover	08F			
12	Fan	PP			
13	End plate	ZL102			
14	Motor stator				
15	Terminal box	ABS			



Dimension

Model	DN1	DN2	L (mm)	W (mm)	H (mm)	L1 (mm)	W1 (mm)	H1 (mm)
XKJ-601IA	1"	1"	445	270	485	74	233	420
XKJ-801IA			445	270	485	74	233	420
XKJ-901IA			460	270	508	93	233	445
XKJ-1101IA			460	270	508	93	233	445

Package Information

Model	GW (Kgs)	L (mm)	W (mm)	H (mm)	Quantity		
					20'/pcs	40'/pcs	40H'/pcs
XKJ-601IA	15.7	480	300	523	364	732	915
XKJ-801IA	16.2	480	300	523	364	732	915
XKJ-901IA	19.5	495	304	525	348	700	875
XKJ-1101IA	20	495	304	525	348	700	875

